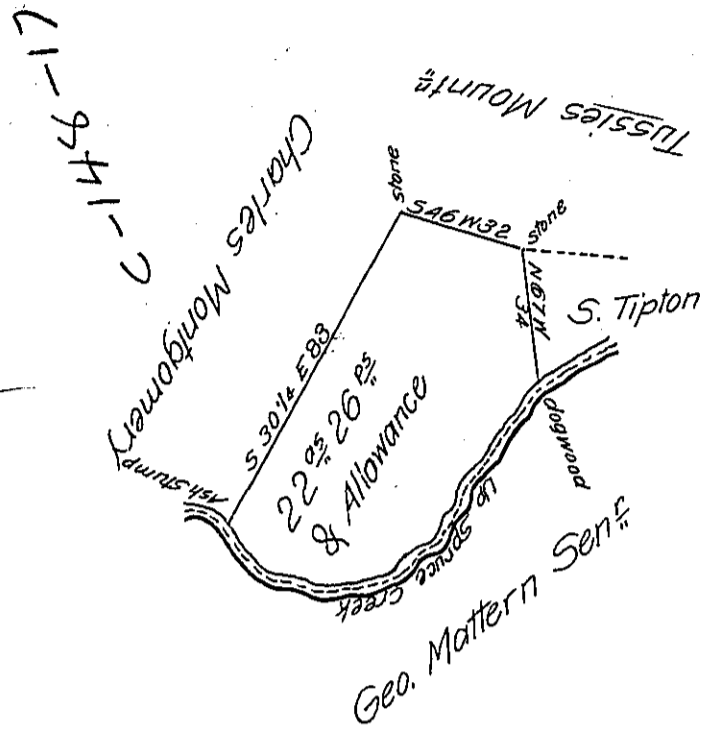


UPSIDE DOWN



Courses & distances up the
Creek Beg^d at Dogwe
thence N 25 E 4
N 11 W 22
N 40 W 16
N 20 W 14
N 4 E 10
N 25 E 18
N 81 E 22
to the Ash Stump

Situate on the South Side of Spruce Creek in Franklin Township Huntingdon County Contain-
ing twenty two Acres twenty Six Perches and Allowance of Six Per Cent & Survey-
ed the 24th day of November 1820. In pursuance of a Warrant to Jacob Mattern dated
the 13th day of October A.D. 1804.

Jacob Spangler Esq^r }
Surveyor Genl }

Peter Cassidy D.S.

IN TESTIMONY that the above is a copy of the original remaining on file in
the Department of Internal Affairs of Pennsylvania, made
conformably to an Act of Assembly approved the 16th day of
February, 1833, I have hereunto set my Hand and caused
the Seal of said Department to be affixed at Harrisburg,
this nineteenth day of January 1906

Isaac R. Brown
Secretary of Internal Affairs.